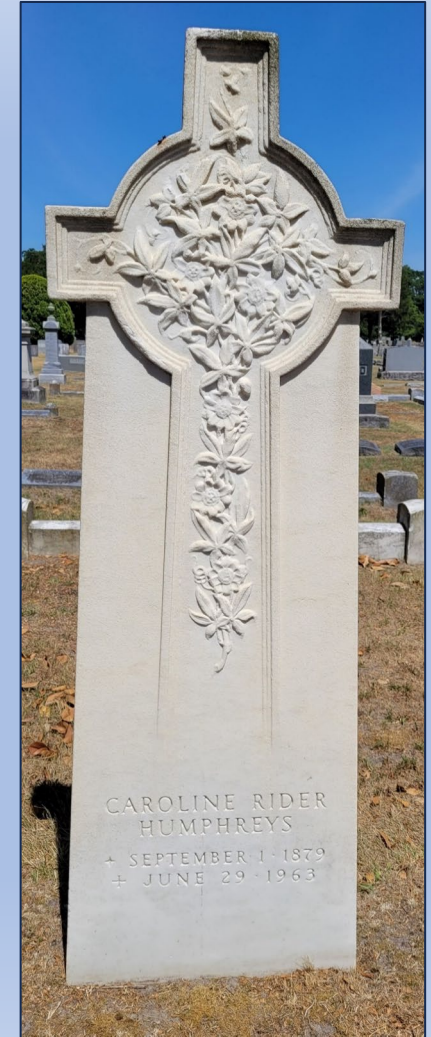


Parsons Cemetery's Historic Markers Walking Tour

This tour will highlight some of the most interesting markers in Parsons Cemetery and will introduce you to the meaning of the symbols used on late 19th and early 20th century grave markers.



HISTORIC MARKERS WALKING TOUR OVERVIEW

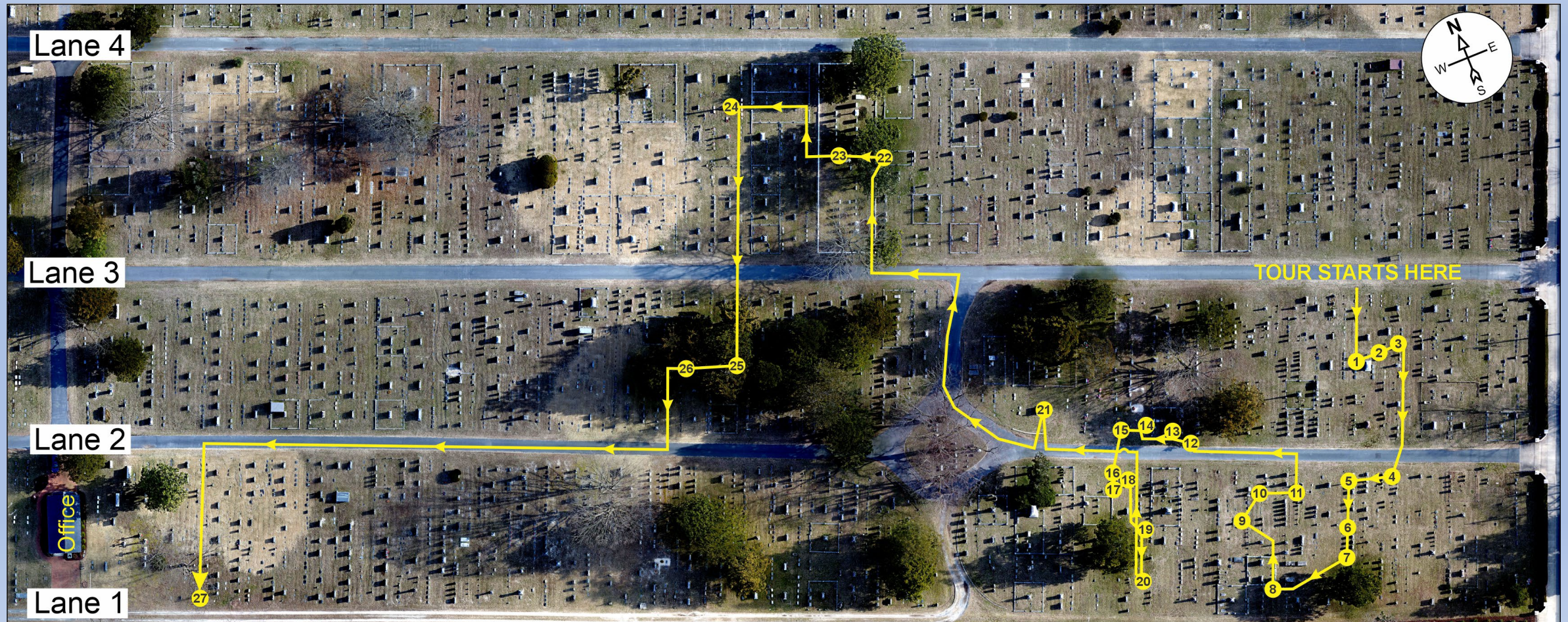
This tour provides a general overview of historic markers in Parsons cemetery.

THE IDEAL TIME TO COMPLETE THE TOUR IS IN THE MORNING.

The total walking distance is less than ½ mile from start to finish and it should take approximately 1½ hours to complete.

The tour starts near the Main Gates on Lane 3 and ends near the cemetery office.

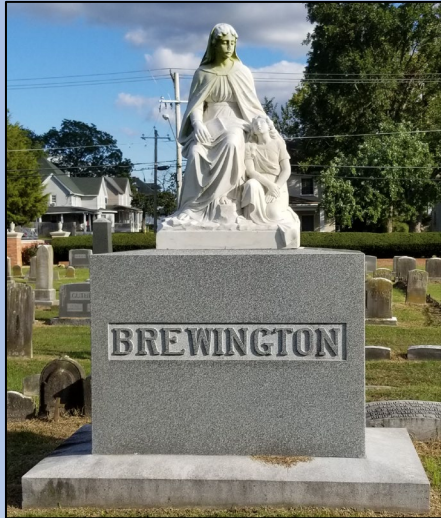
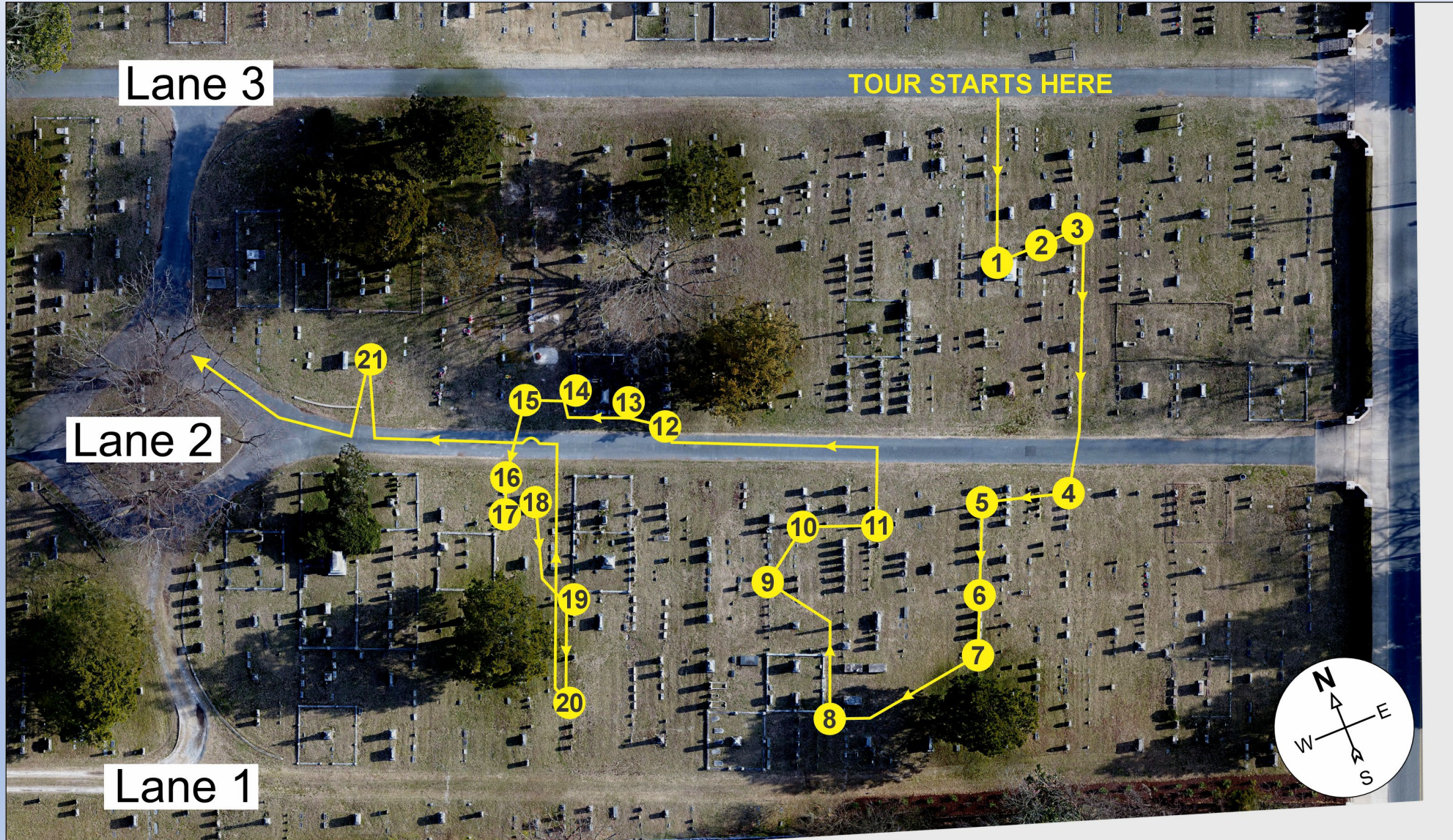
This tour is designed to be viewed on a standard-sized cell phone held in landscape view.



HISTORIC MARKERS WALKING TOUR START

The tour starts on Lane 3 near the front gates.

The first stop on this tour is a large marble statue on a grey granite base to the south of Lane 3.



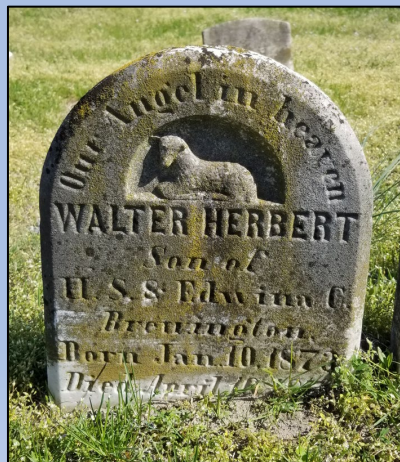
Stop 1 – The Brewington Lot

We begin the markers tour with the largest marble statue in the cemetery, a beautiful rendition of the Virgin Mary. Throughout the tour, different symbols or features will be highlighted in **BOLD**.



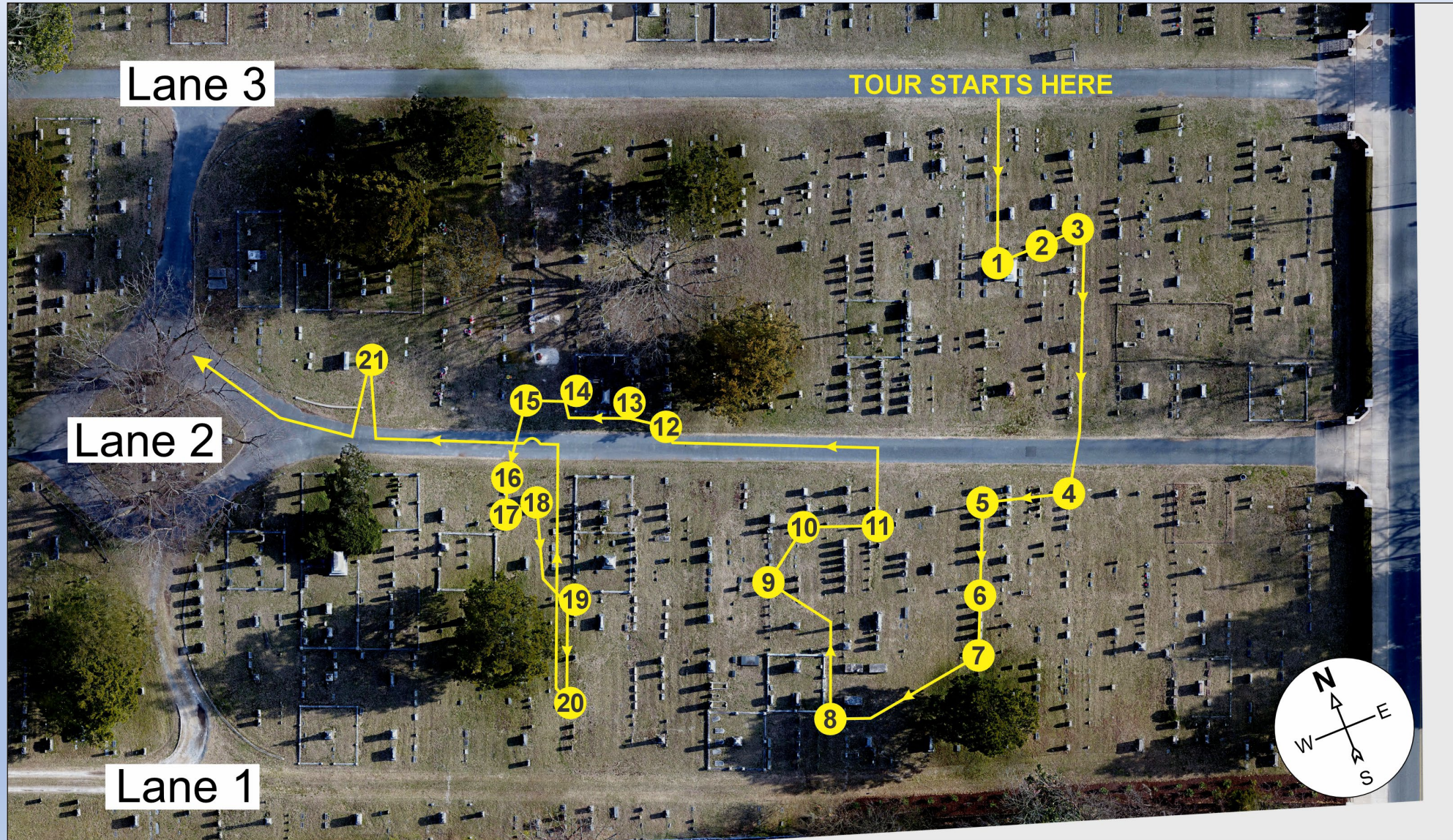
ARCHES – Arches represent passage into the next life. This is the only example in the cemetery.

LAMB - Purity, gentleness, innocence. Lambs are popular on children's grave markers. A different example of a lamb is shown below right.



HISTORIC MARKERS WALKING TOUR

Stops 2 & 3 are just east of Stop 1.



Stop 2 – Clifford Adams

DOVES - Peace; the Holy Spirit.

Ascending Dove - A dove ascending to heaven is transporting the soul.

Descending Dove - A dove descending from heaven is assuring one's passage to heaven.

This dove appears to be ascending. In the example below, from another part of Parsons, the dove is descending.



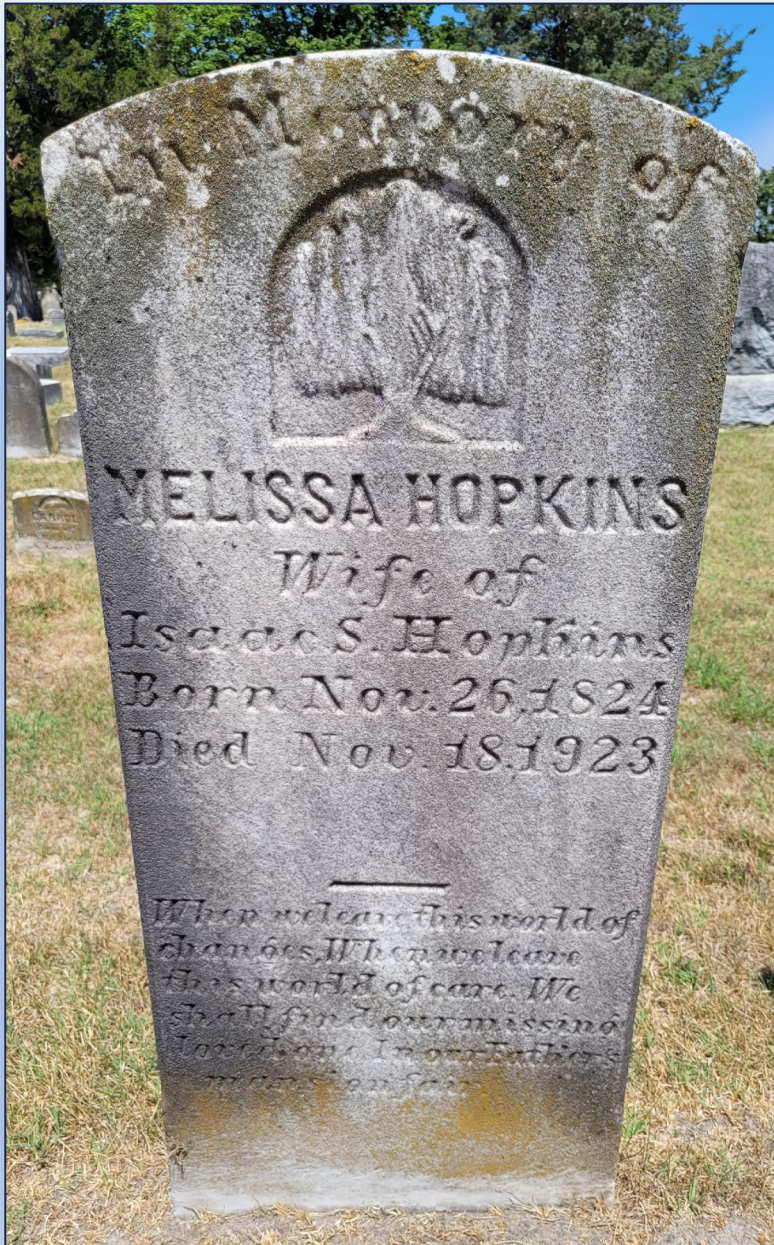
This marker is also a good example of **DOORS AND GATES** which represent Passage into the afterlife or a Heavenly entrance.



Stop 3 – Melissa Hopkins

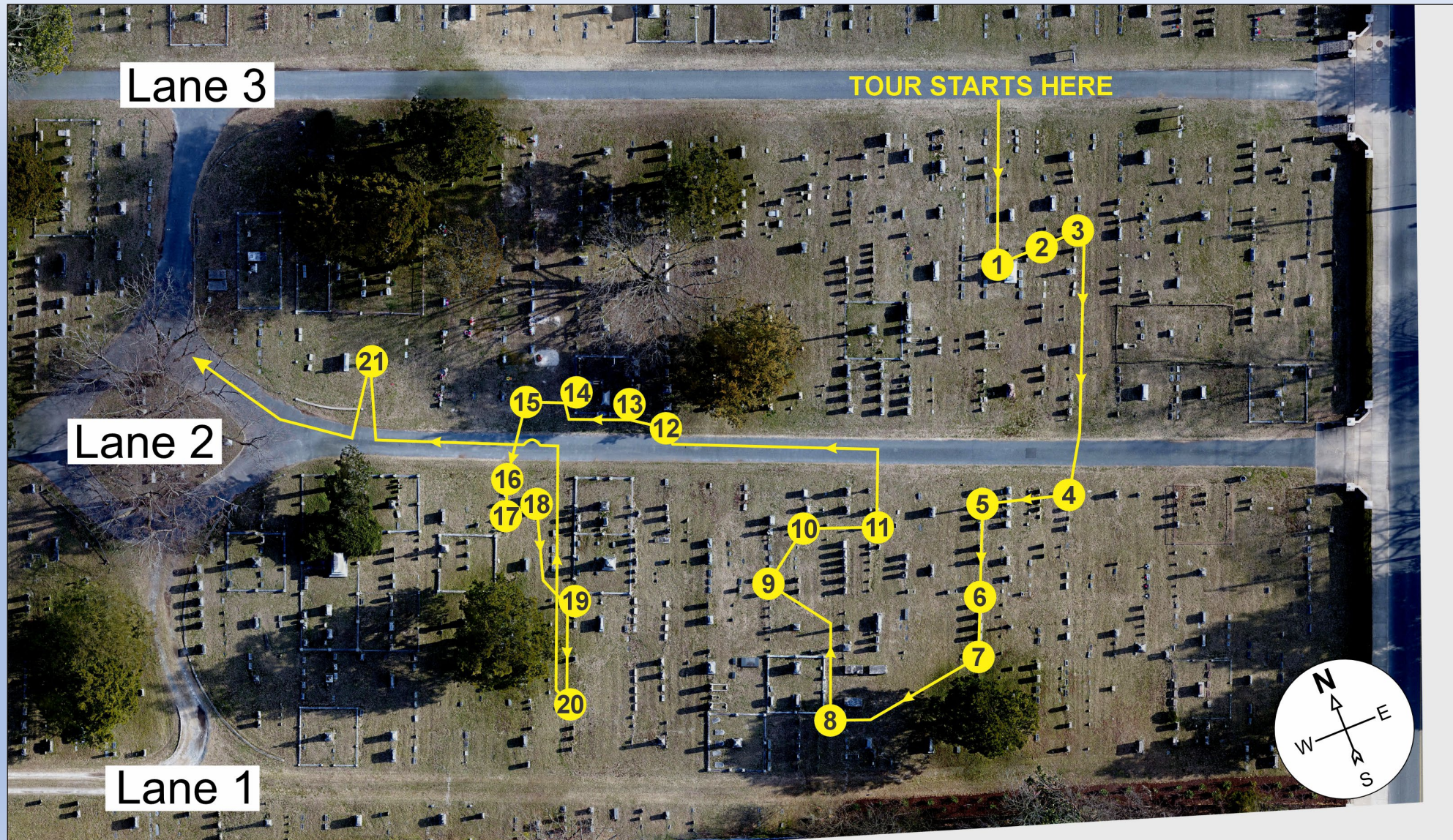
WILLOW - Mourning and earthly sorrow. Weeping willows, with their drooping branches, represent mourning and remembrance. This is a fairly common marker symbol for the late 1800s and early 1900s.

Some more examples from around Parsons are shown below.



HISTORIC MARKERS WALKING TOUR

Proceed south
towards Lane 2.
Cross lane 2 to find
Stops 4 and 5.



Stop 4 – Conrad R. Jordan



HANDSHAKE - Welcoming of a soul into Heaven; Symbolic of a last good-bye; A bond between spouses (if hands are feminine and masculine). Look at the cuff to distinguish between a man's or woman's hand. A woman will have a frilly cuff (on the left in this example).



The person who died first holds the other's hand, guiding the spouse to heaven. Most of the hands show the right hand in a grasp with fingers overlapping the other hand while the left hand is open.

Stop 5 – George W.M. Cooper

BROKEN COLUMN - A broken column indicates a life cut short, a memorial to the death of someone who died young or in the prime of life, before reaching old age.

This column has an octagonal base.

Columns are usually set on one or more **PLINTHS** (the square sections) atop a base.

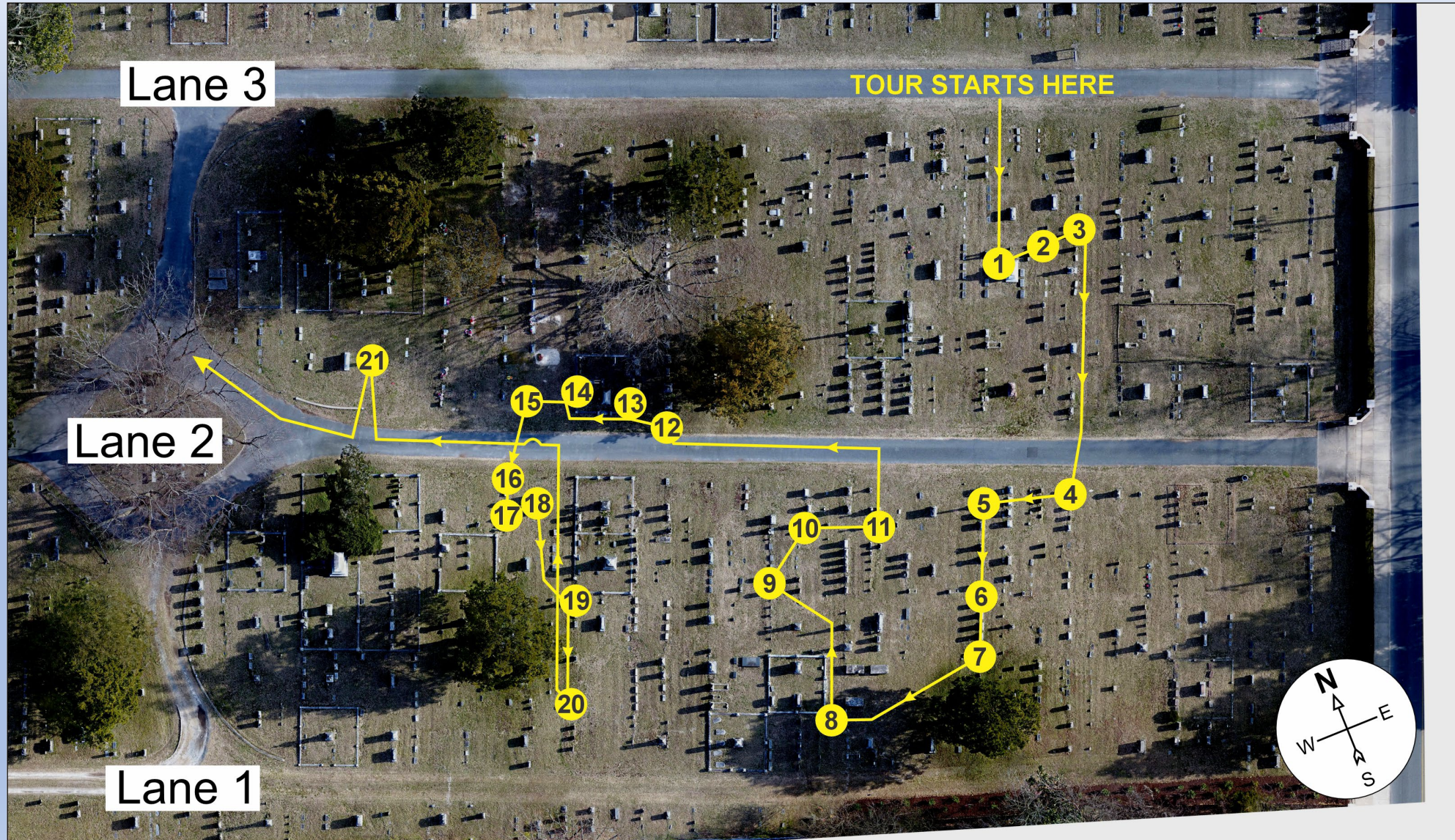
Another nice example from a different part of the cemetery is shown on the right. This one is also wrapped in ivy leaves. **IVY** carved into a tombstone is said to represent friendship, fidelity and immortality.

On this young man's marker, from another part of the cemetery, the symbol of a broken column was used.



HISTORIC MARKERS WALKING TOUR

Continue south along the same row to reach the White family lot where stops 6 & 7 and located



Stops 6 & 7 – Ernest J. White and James W. White



These brothers have slightly different markers.

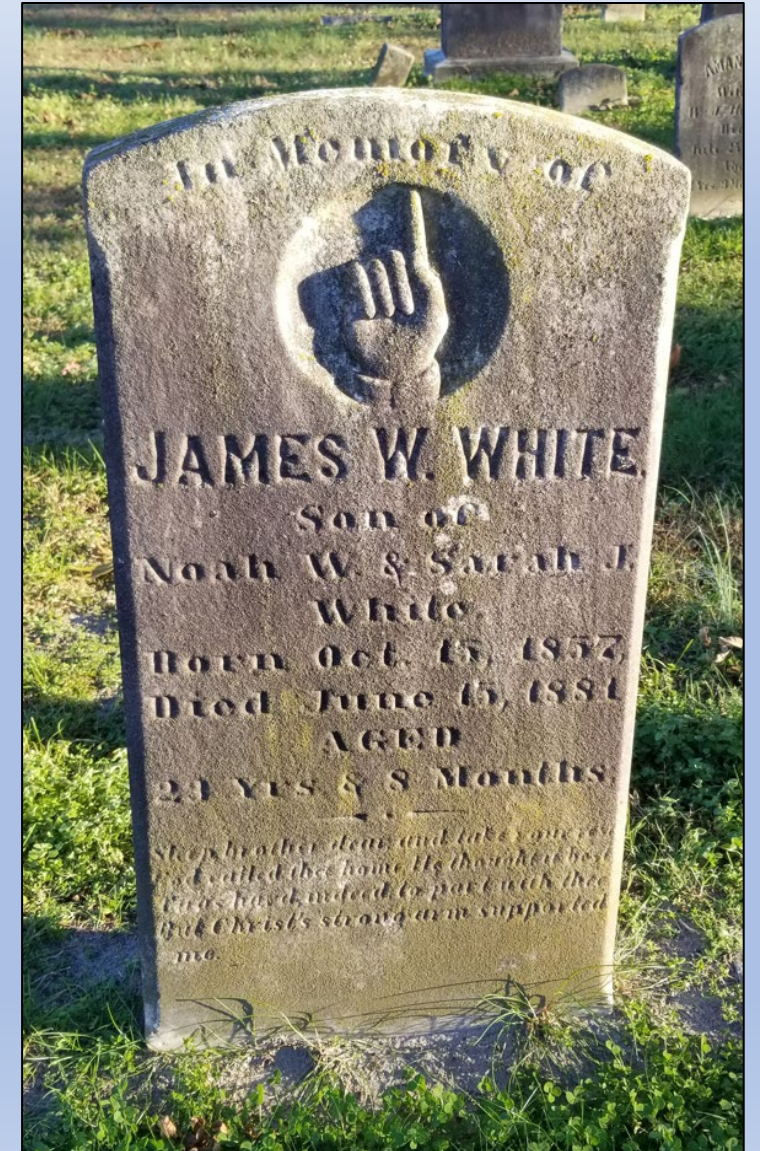
FOREFINGER POINTING DOWN –

This symbol can be interpreted to mean God reaching down for the soul; mortality; or sudden death. In this example, the hand is also holding a flower.



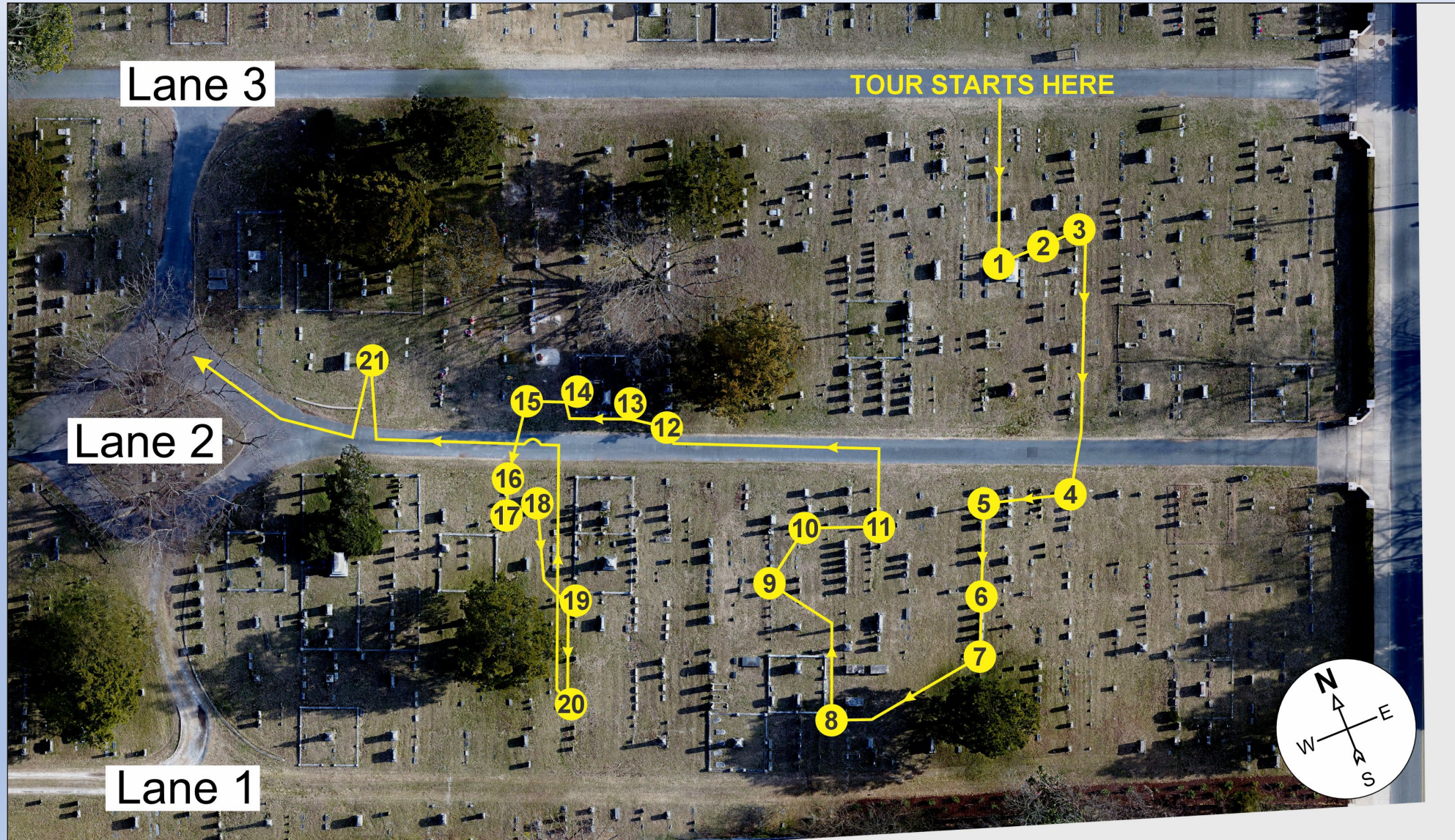
FOREFINGER POINTING UP -

This symbol can be interpreted to mean the reward of the righteous; the confirmation of life after Death; heavenly reward; or the ascension to heaven.



HISTORIC MARKERS WALKING TOUR

Travel west across the grassy area to reach Stop 8. Then move north and west to reach Stop 9.





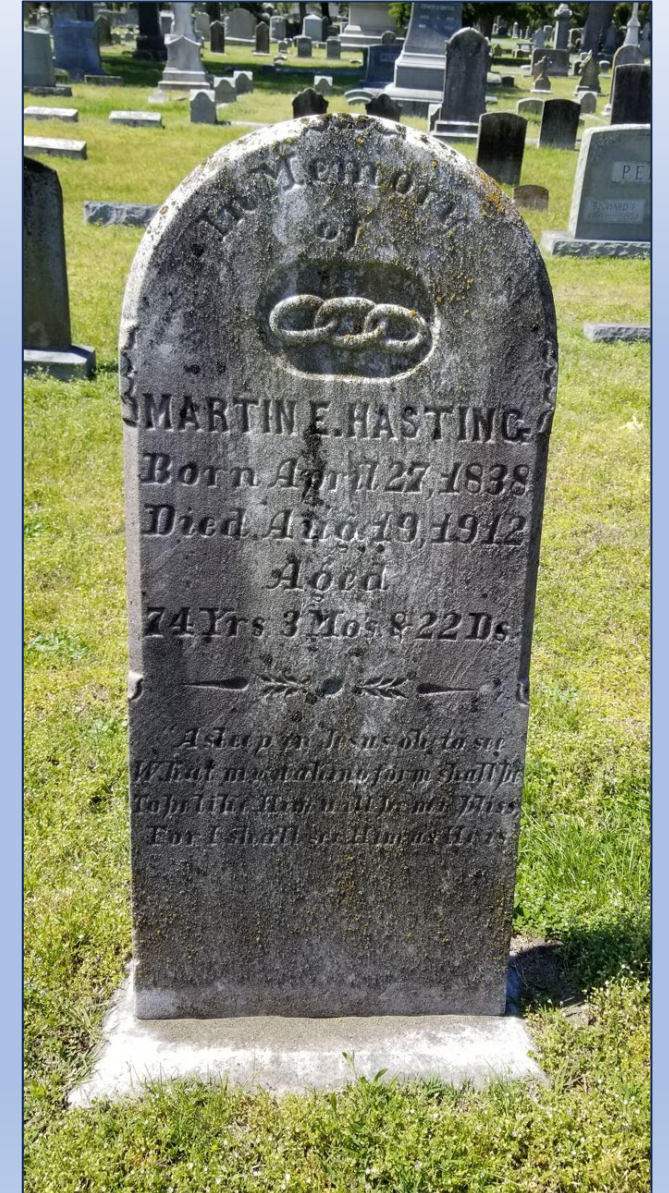
Stop 8 – Ernest V. Byrd

OLIVE BRANCH - The olive branch, often depicted in the mouth of a dove, symbolizes peace - that the soul has departed in the peace of God. This dove is also ascending.



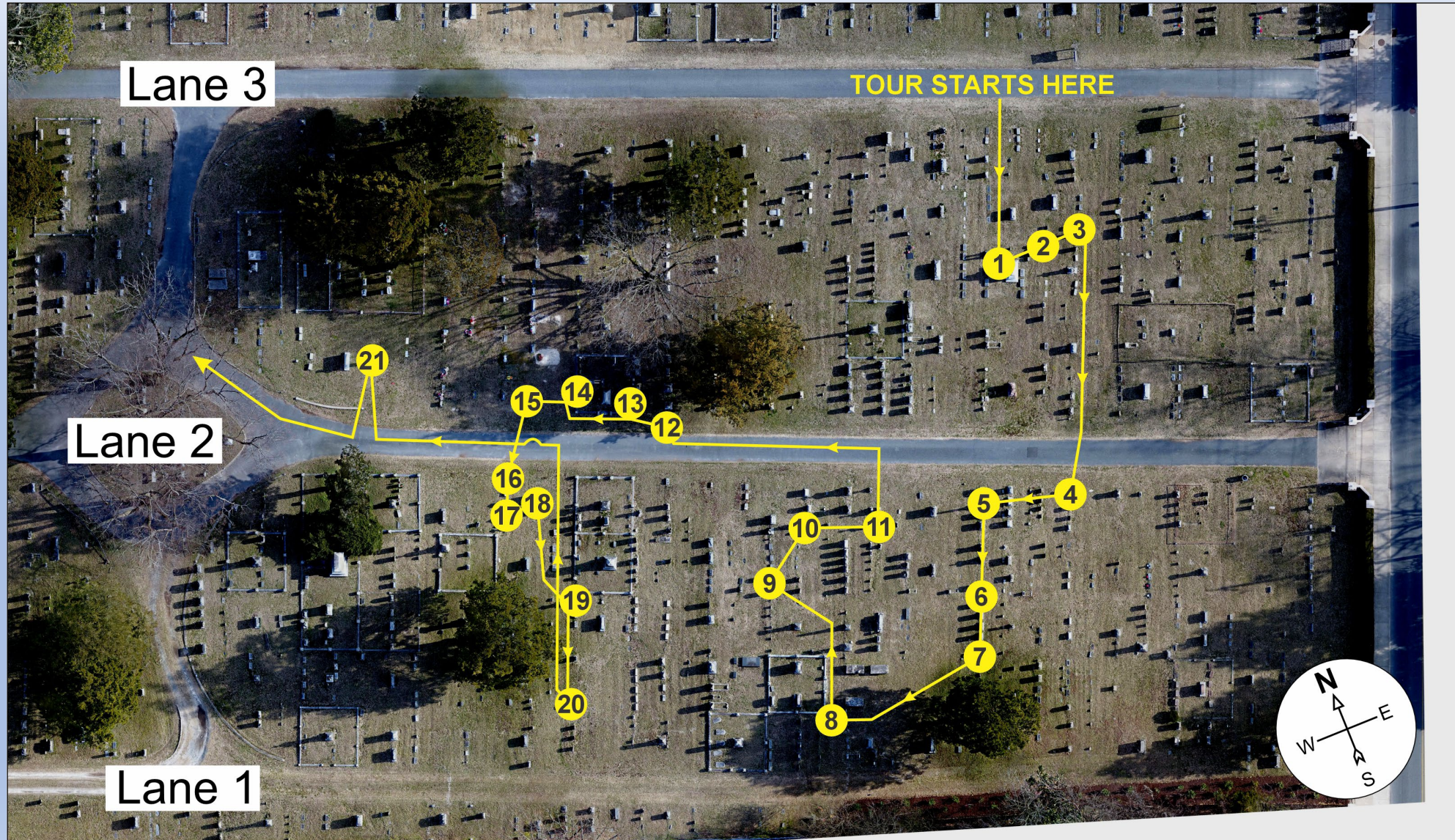
Stop 9 – Martin E. Hasting

CHAIN - Medieval thinkers sometimes held that a golden chain bound the soul to the body.



HISTORIC MARKERS WALKING TOUR

Stops 10 & 11 should be obvious as they are tall markers to your east.





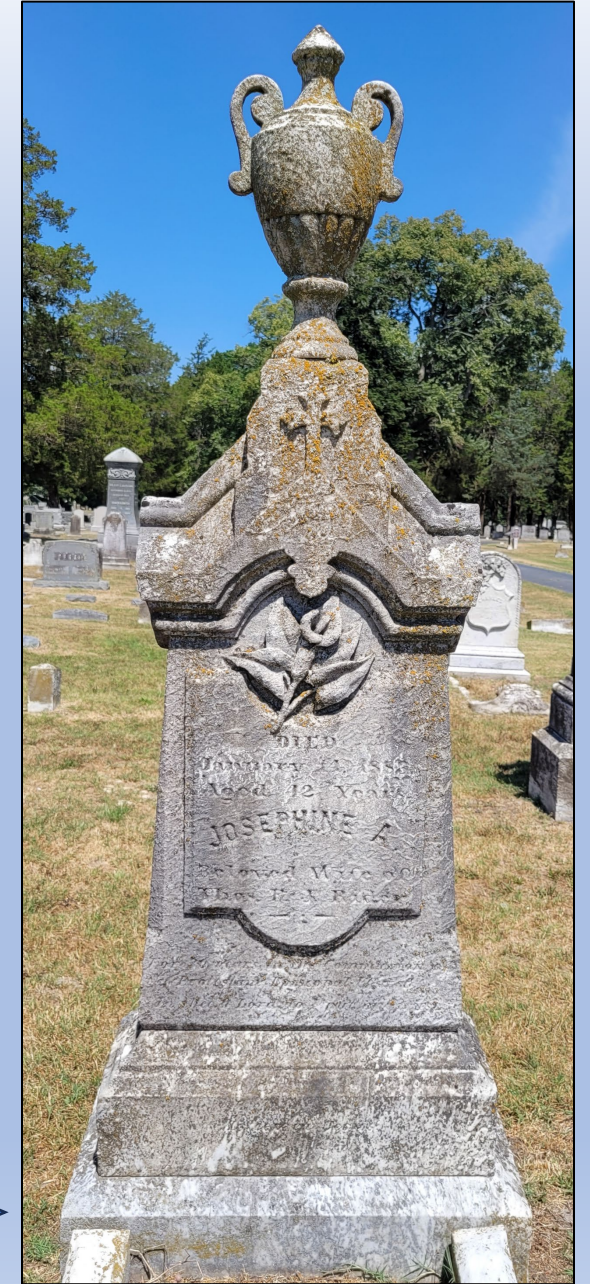
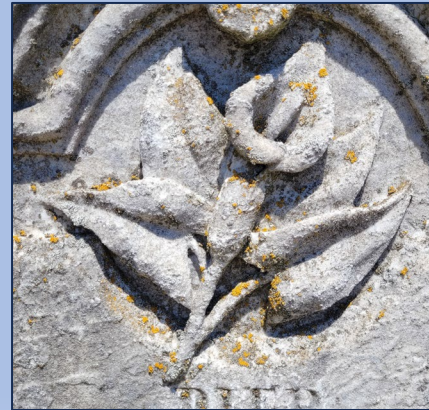
Stop 10 – Charles Whitelock

CROWN ON A CROSS -
Sovereignty of Christ.
This symbol can be seen on many older markers in Parsons.



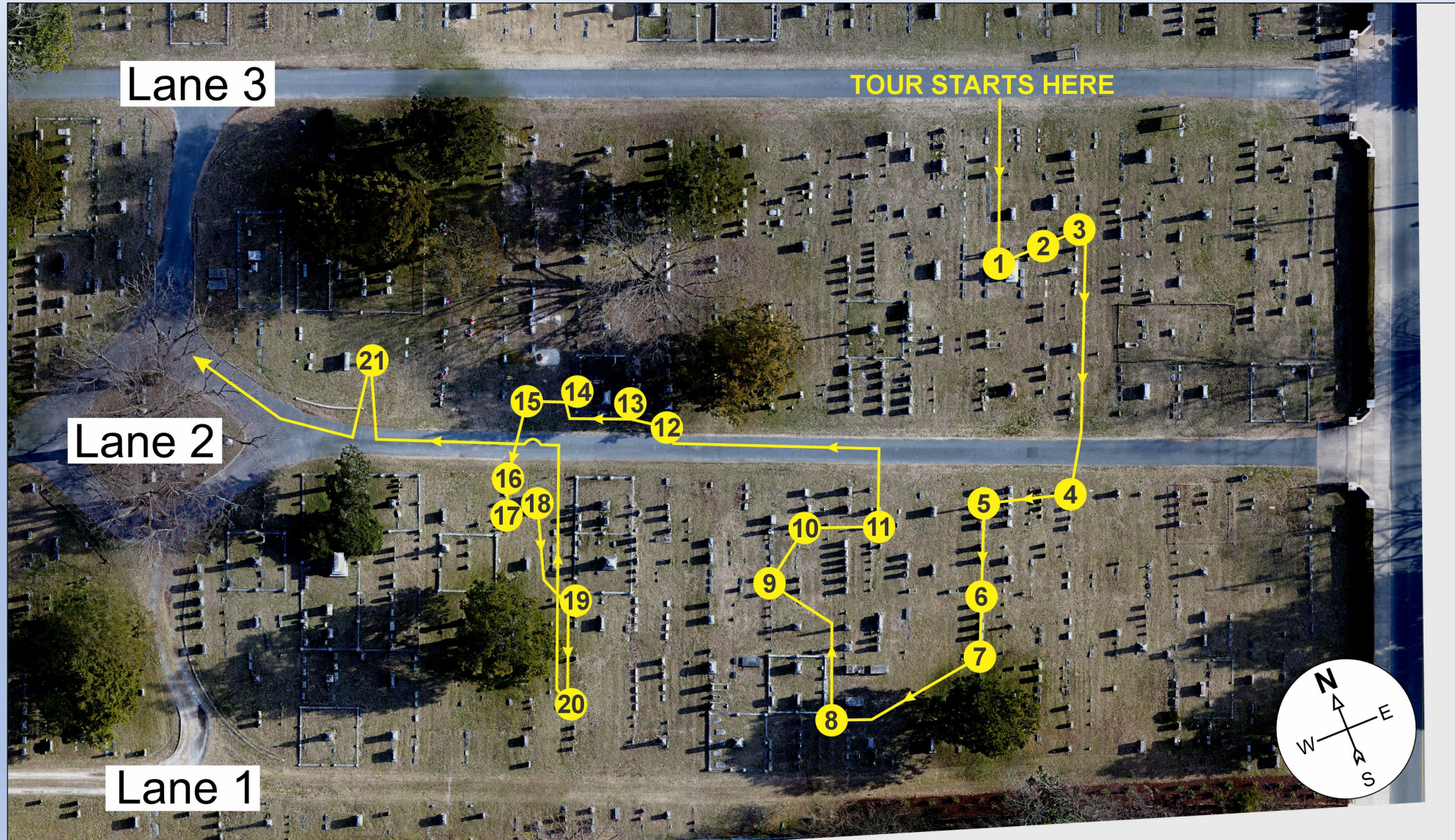
Stop 11 – Josephine A. Rider

CALLA LILY - A symbol reminiscent of the Victorian era, the Calla lily represents majestic beauty and is often used to represent marriage or resurrection.

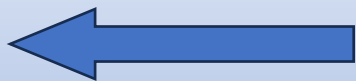


HISTORIC MARKERS WALKING TOUR

Return to Lane 2 and travel west for a couple hundred feet. Stops 12, 13, 14 & 15 should be obvious as they are all right along Lane 2.



Stop 12 – Charles F. Dashiell

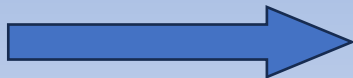


UNBROKEN COLUMN -
A complete and full life.

Stop 13 – John Henry White

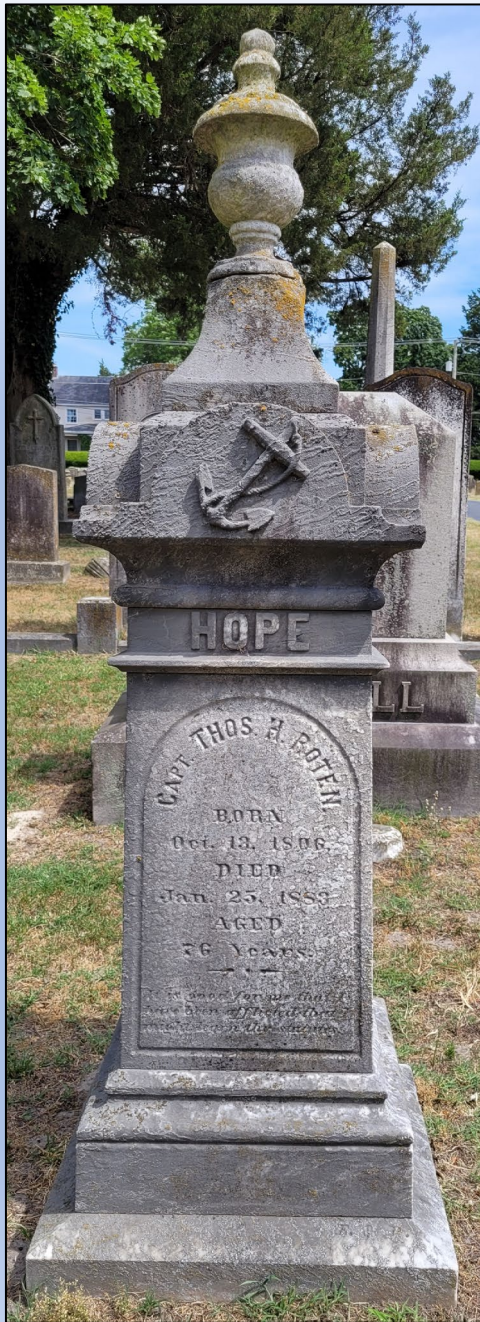
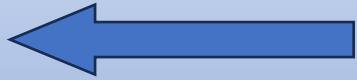
“I.H.S.” - Signifies devotion to Jesus Christ; variously interpreted as an abbreviation for His name as spelled in ancient languages.

This symbol, which sort of looks like a dollar sign, is the letters I, H, and S superimposed over each other. These represent the Greek letters Iota (I), Eta (H) and Sigma (Σ), which are the first three letters of Jesus in Greek.



Stop 14 – Capt. Thomas H. Roten

ANCHOR - Hope; also used if someone was a sailor or in the Navy, as in this case.



Stop 15 – John Kaylor

COMPASS AND SQUARE – A symbol used by the Masonic Order, a fraternal organization. Symbolized by an inverted compass over a carpenter's square, often with a G in the middle. Many examples can be found in Parsons.

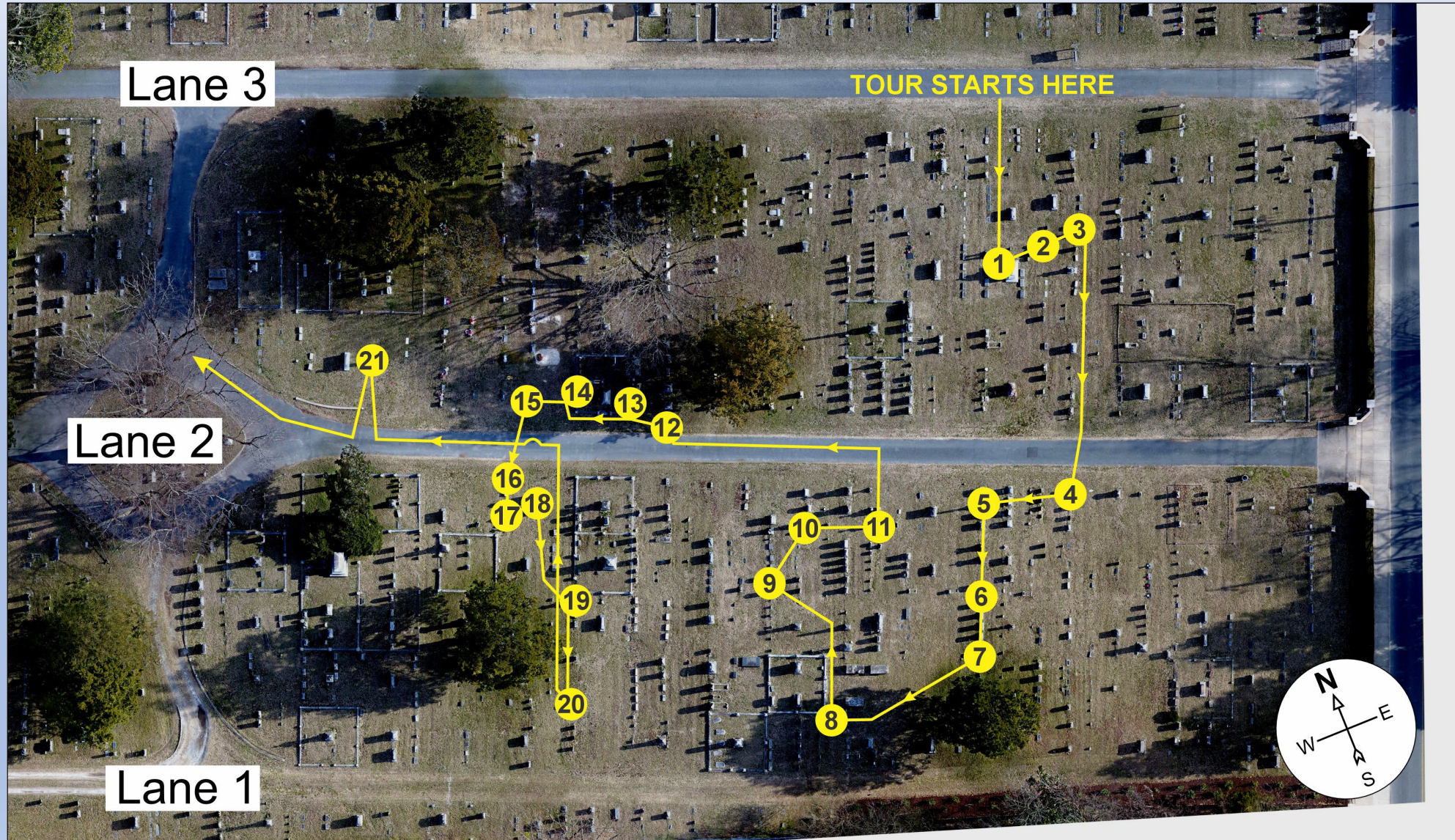


Another example in Parsons



HISTORIC MARKERS WALKING TOUR

Now cross Lane 2 to arrive at the Doward-Ellis lot, Stops 16, 17 and 18.



Stop 16 – John T. Ellis

Quite a few of the markers on this tour were carved by John T. Ellis. John and his partner Joseph H. Doward (Stop 18), were partners of the firm Ellis & Doward, Salisbury marble dealers. When Joseph retired, the company became J.T. Ellis & Son.

Some of the markers in other parts of Parsons, as shown to the right, have John's initials on them (J.T.E.)

Sadly, some of best work can be seen on his own children's markers (Stop 17).



Interestingly, John's own marker is quite simple



The Courier, Apr. 28, 1906
 —J. T. Ellis & Son have just erected in Parsons Cemetery a beautiful Celtic cross over the grave of Mrs. David Howard. The cross is a handsome specimen of the stonemason's art and the only one of its kind in this section.

—A very handsome Quincy granite monument has been placed in Parsons Cemetery by Mr. J. T. Ellis of this town. The monument is erected at the grave of the late Jesse Davis and members of his family. It is some ten feet high and is finished at the top with a beautiful urn.

Stop 17 – The Ellis children



Another example of the **FINGER POINTING DOWNWARDS** with flowers in the hand.



ROSE - Love; beauty; virtue; motherhood. May indicate how old the person was at the time of death:

- Just a bud - normally a child 12 or under
- Partial bloom - normally a teenager
- Full bloom - normally in early/mid twenties. The deceased died in the prime of their life.

In this example, one rose is blooming, and one is still closed.



Stop 18 – The Doward Lot

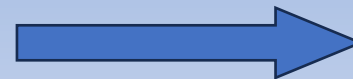
It is not clear if this intricately-carved marker was done by Joseph Doward or John Ellis.

LILY - Lilies are a symbol of innocence, chastity, and purity. They are often associated with Mary, the mother of Jesus, and are used on women's gravestones.

HALF-CARVED TOMBSTONE - This marker is also a good example of a half-carved tombstone, which represents the transition from life to death.

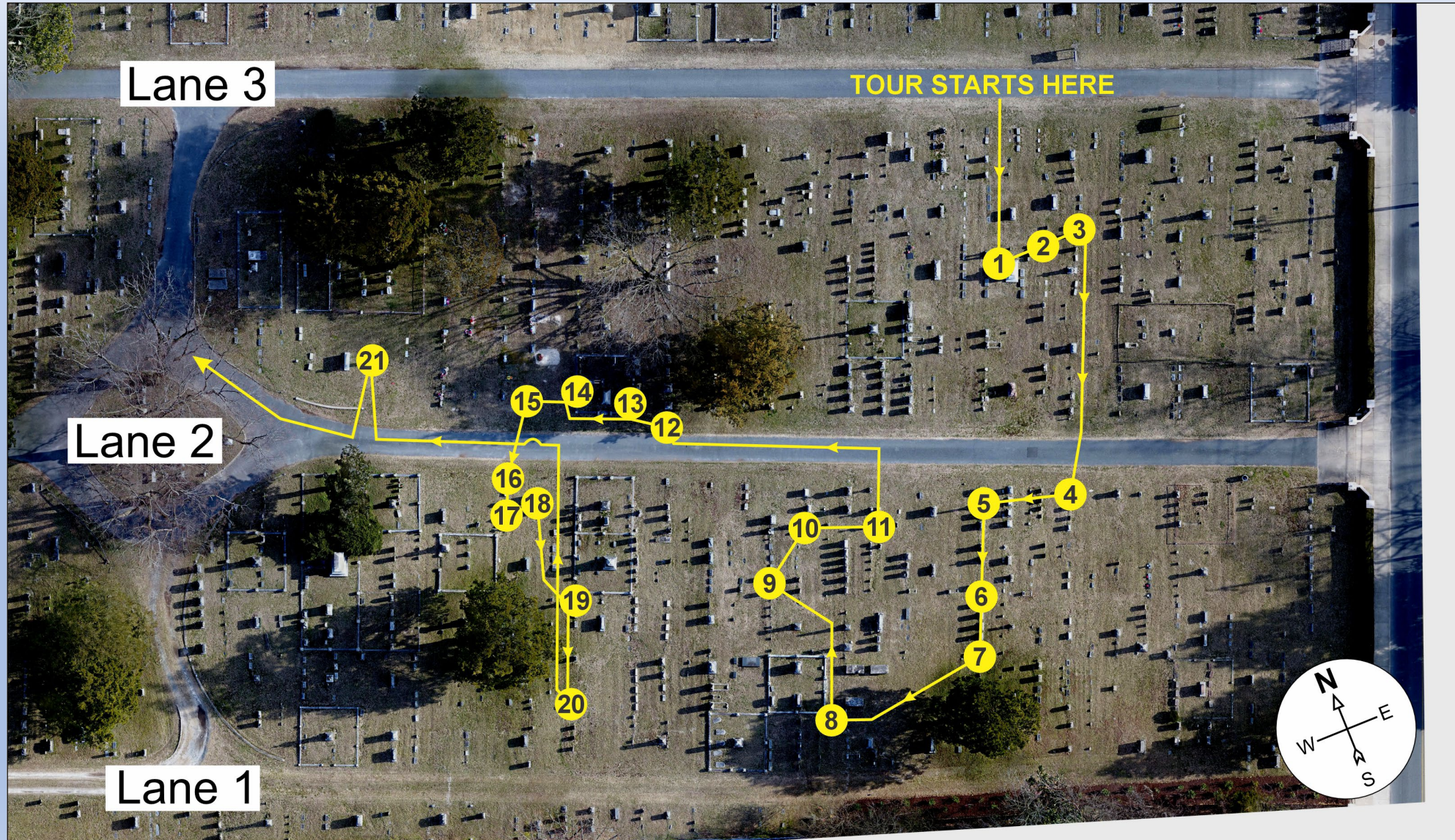


SCROLL - Symbol of life and time. Both ends rolled up indicate a life that is unfolding like a scroll of uncertain length and the past and future hidden.



HISTORIC MARKERS WALKING TOUR

Travel south along
the aisle to reach
Stops 19 & 20.



Stop 19 – Georgie B. Shipley Strattner

URN - Greek symbol of mourning. Urns are a very common decorative feature on many of the older markers. If you look on the base of this marker, you will see E & D which stands for Ellis & Doward.



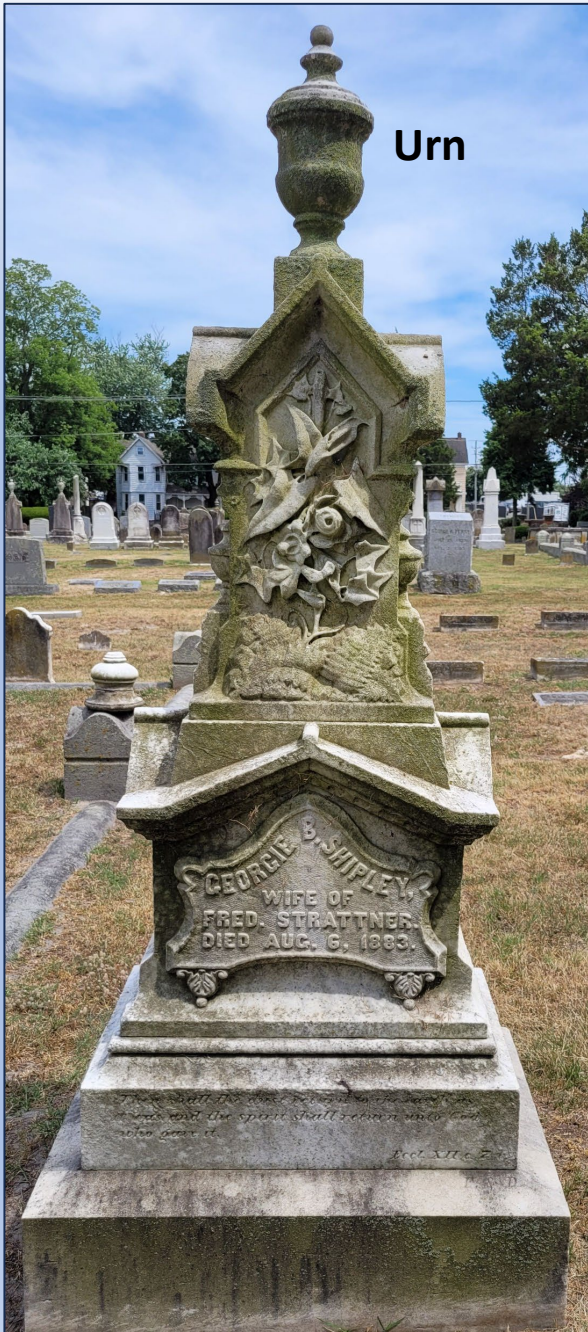
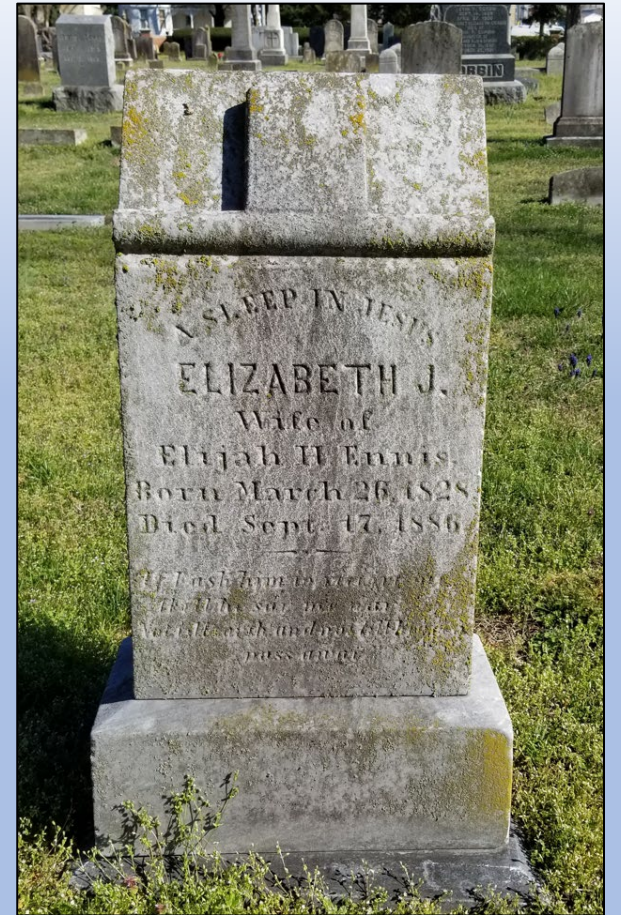
This marker also has a nice bouquet of roses, Calla lilies and vines.



Stop 20 – Elizabeth J. Ennis

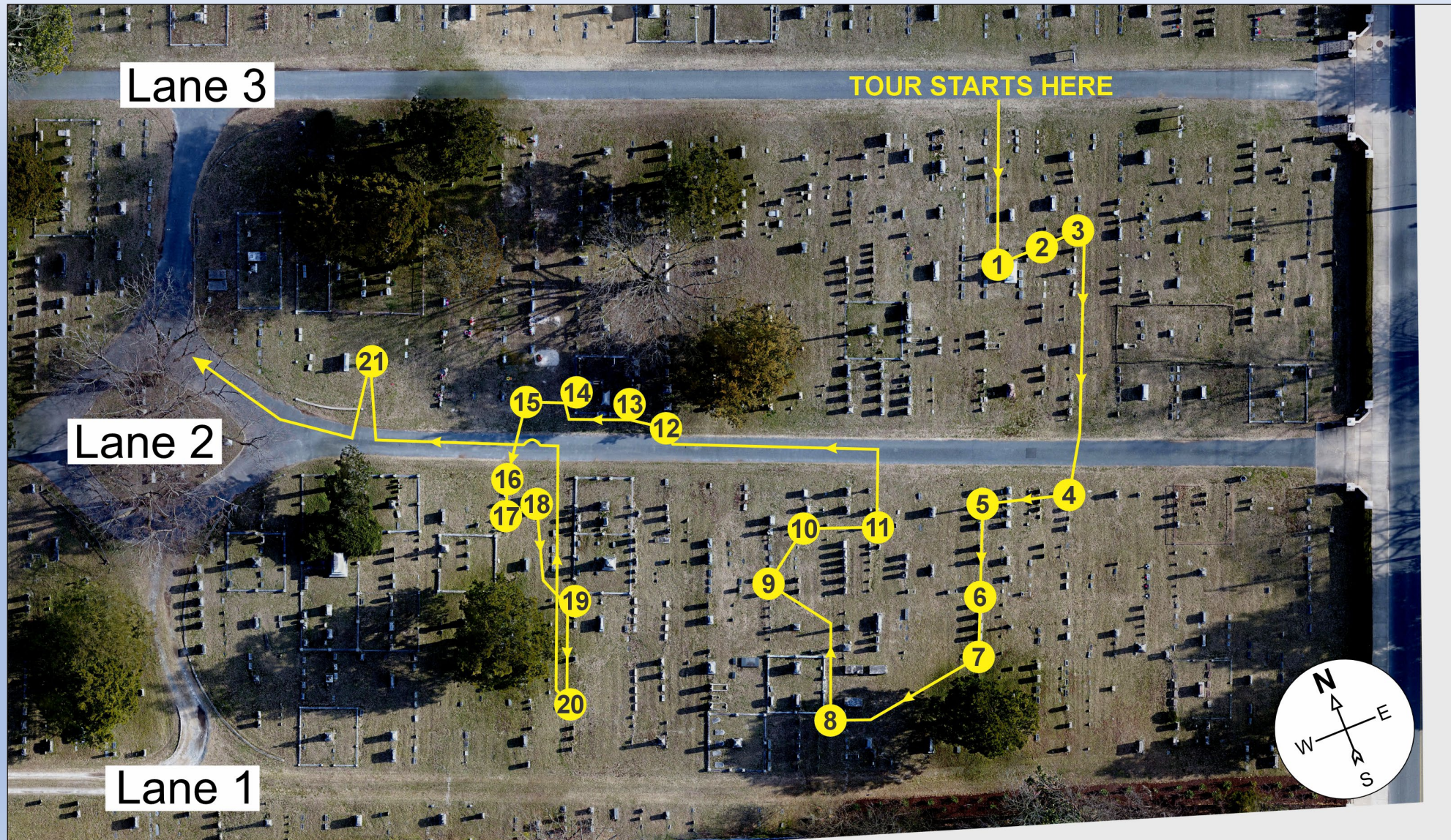
BOOK - Often the Bible; book of life. In this example, the book is closed.

In this example from another part of the cemetery, the book is open.



HISTORIC MARKERS WALKING TOUR

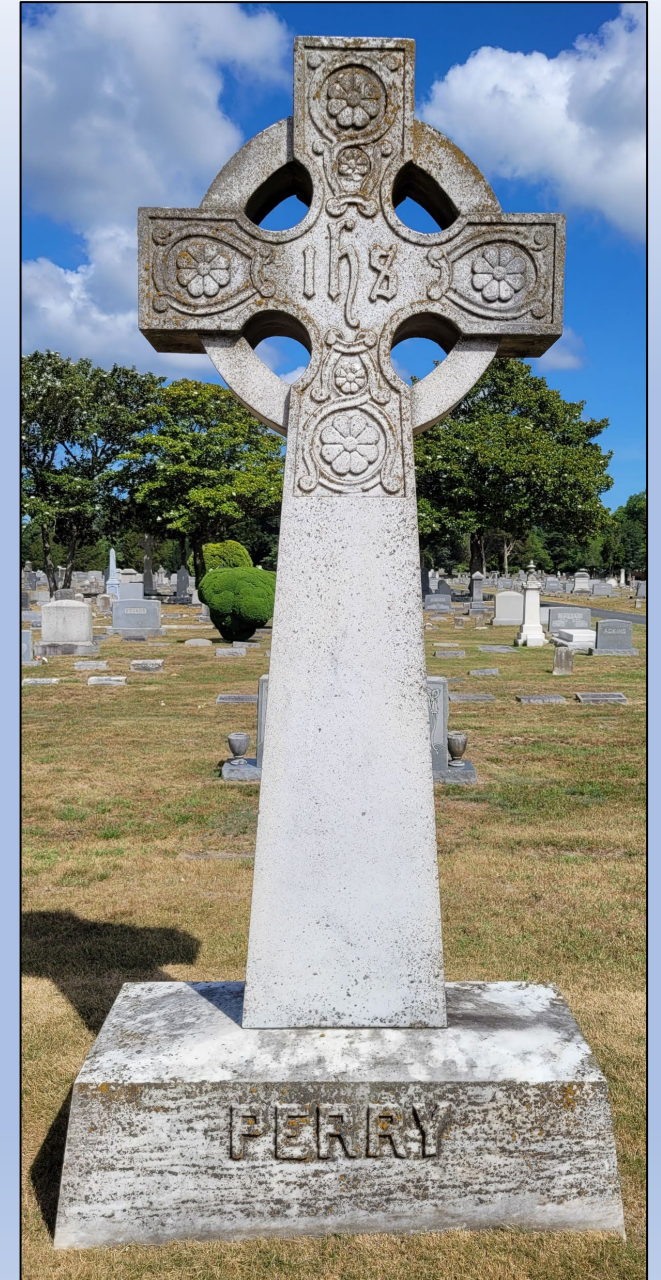
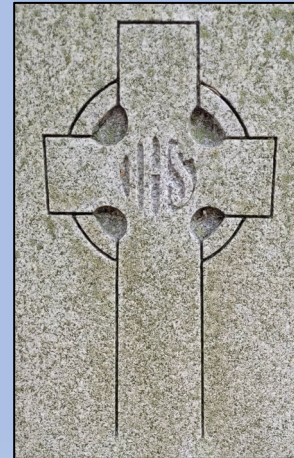
Travel north to return to Lane 2. Turn left and travel west along the lane. On your right will be a large white cross. This is Stop 21.



Stop 21 – The Webb Cross

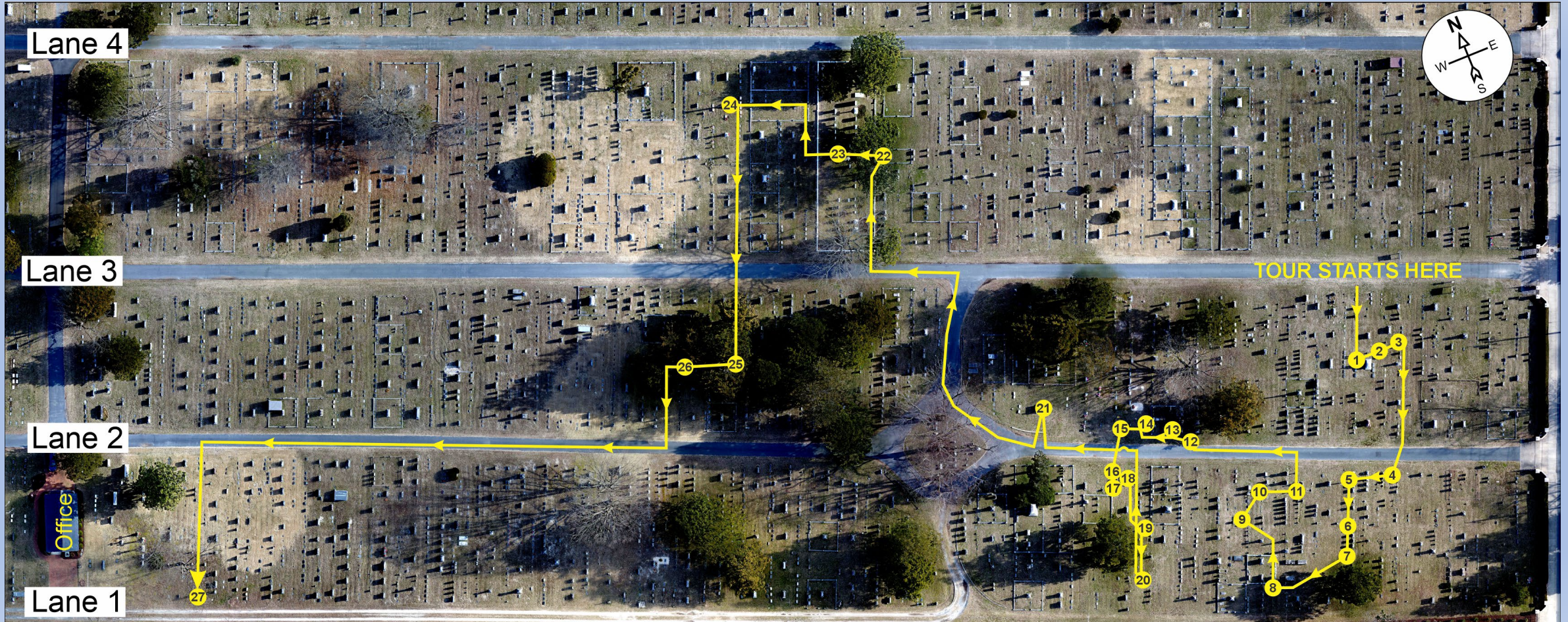
CELTIC CROSS or IRISH CROSS - The Celtic or Irish cross, taking the form of a cross within a circle, generally represents eternity. Several examples can be found in Parsons, but this one is the most ornate

The Celtic cross is commonly used on many smaller markers too.



HISTORIC MARKERS WALKING TOUR

Continue west, travelling to the right of the circle. Use the cut-over lane to travel to Lane 3. Turn left and walk westward. In a short distance, you will see a large family lot surrounded by white coping. Walk up the aisle along the edge of the lot to reach Stops 22 & 23.

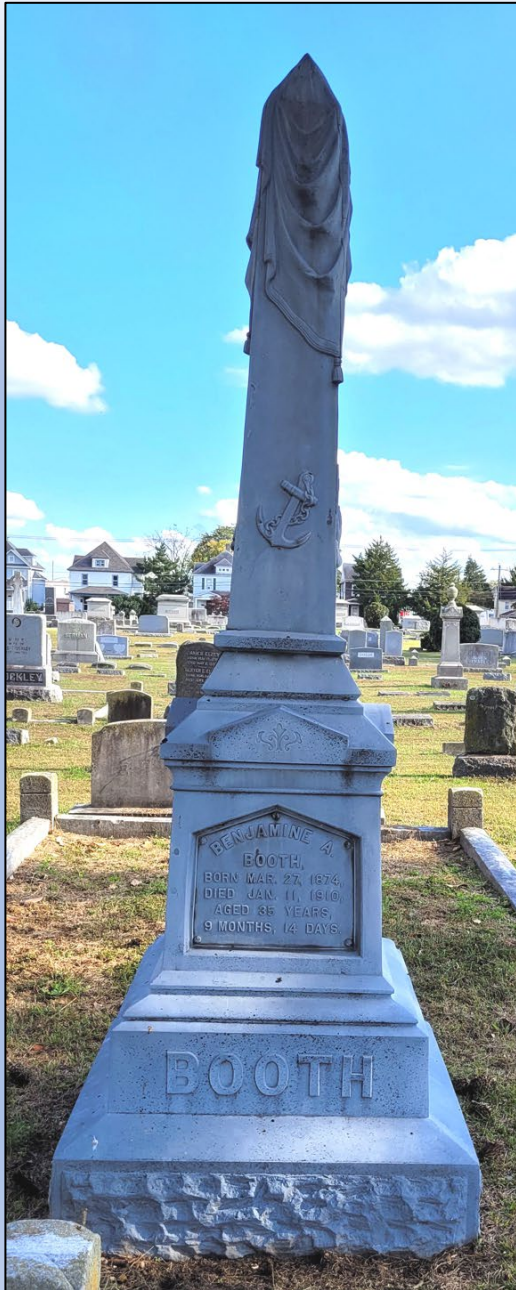


Stop 22 – The Booth Shaft

The Monumental Bronze Co. in Bridgeport, CT began creating zinc grave markers in the 1870s. They appeared to be made of stone but were less expensive, durable, and resistant to algae and lichen growth. Once the zinc oxidizes, it creates the blue-grey patina which protects the monument from further corrosion. They were popular until about WWI. This particular zinc shaft has several symbols we've seen before, plus a couple new ones:

DRAPERIES are a symbolic expression of mourning and sorrow. They are also symbolic of palls used to cover coffins in Christian funerals.

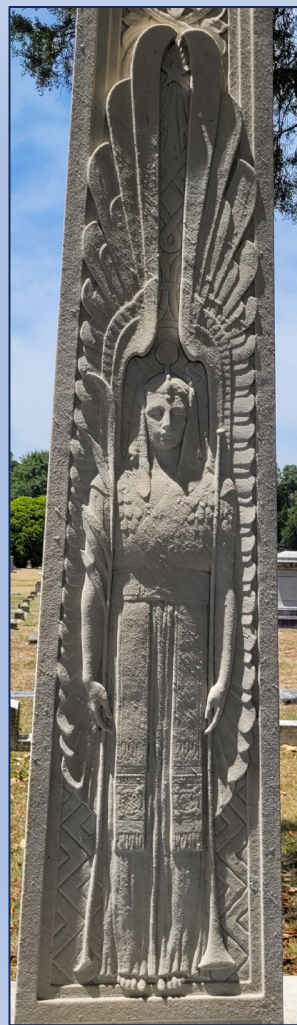
The **RIFLES** are a nod to the fact that Benjamine Booth was an Army veteran.



Stop 23 – Elihu E. Jackson Lot

The Gov. E. E. Jackson Family Lot

“an exquisite outdoor gallery of art”



The Jackson Family Lot is the largest lot in the Cemetery with 30 beautiful and artistic monuments. The monuments for Gov. E. E. Jackson, his wife, Annie Rider, and son Hugh William (next slide) all share a common theme.

The figure on the east side of the cross is unknown, however, the ancient Greek goddess of victory, Nike, shares the large elaborate wings.



Louis Comport Tiffany, Tiffany Studios' Ecclesiastical Division, is credited with this design.



Stop 23 – Elihu E. Jackson Lot



Annie Rider Jackson



Hugh William Jackson



Margaret Anne Rider



Noah Harrison Rider

Stop 23 – Elihu E. Jackson Lot



Alice Byrd Rider



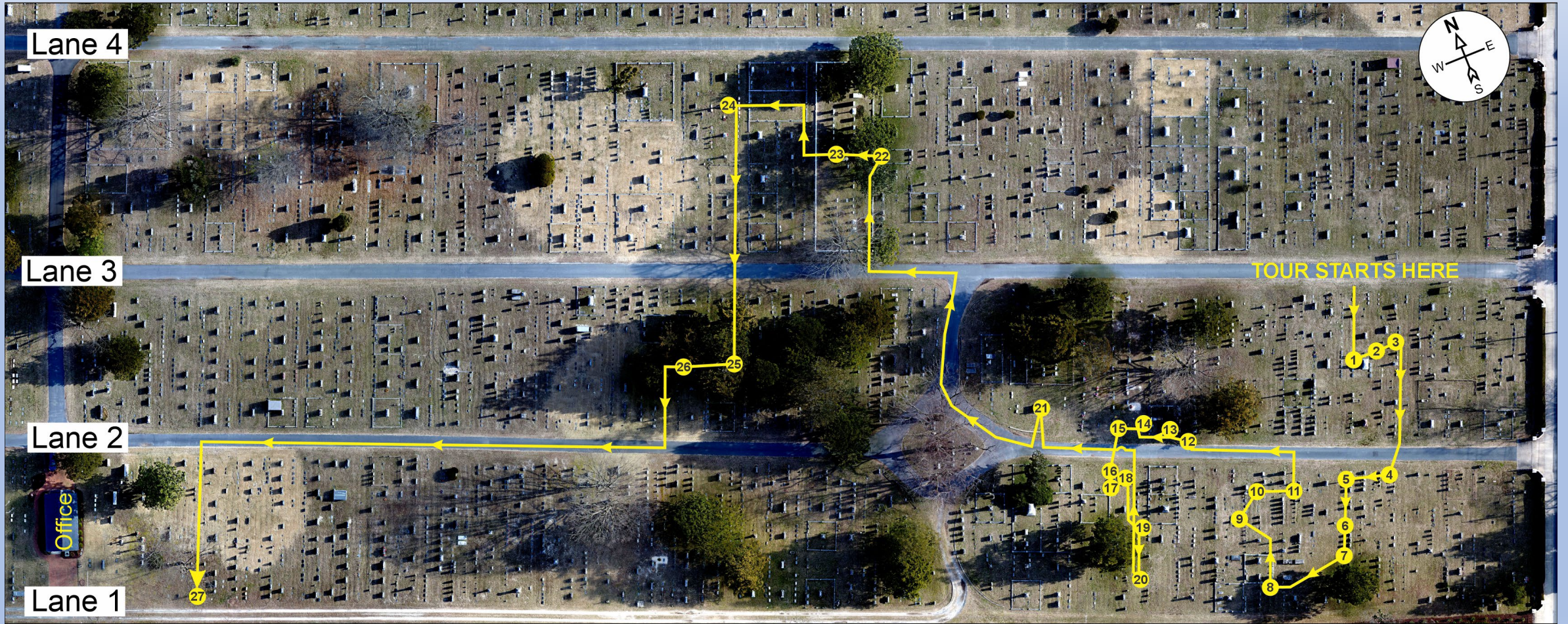
John Byrd Rider



John Rider Vandebogart

HISTORIC MARKERS WALKING TOUR

Stop 24 is just a short distance to the west. Look for a tall, pink marble column.



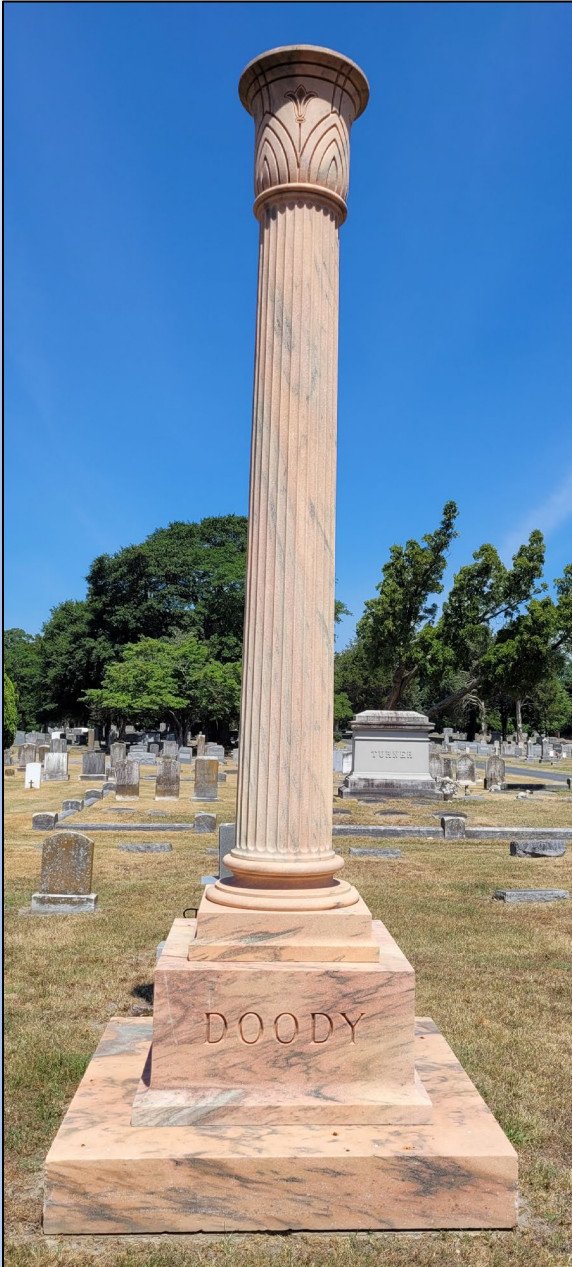
Stop 24 – The Doody Lot

At 18 feet tall this pink marble column with an urn on top is the tallest monument in Parsons Cemetery. The unbroken fluted column sitting on several square plinths of decreasing size is a Classical feature as is the smooth rounded engraved **CAPITAL** on the top. This monument signifies a noble life, a head of the household.



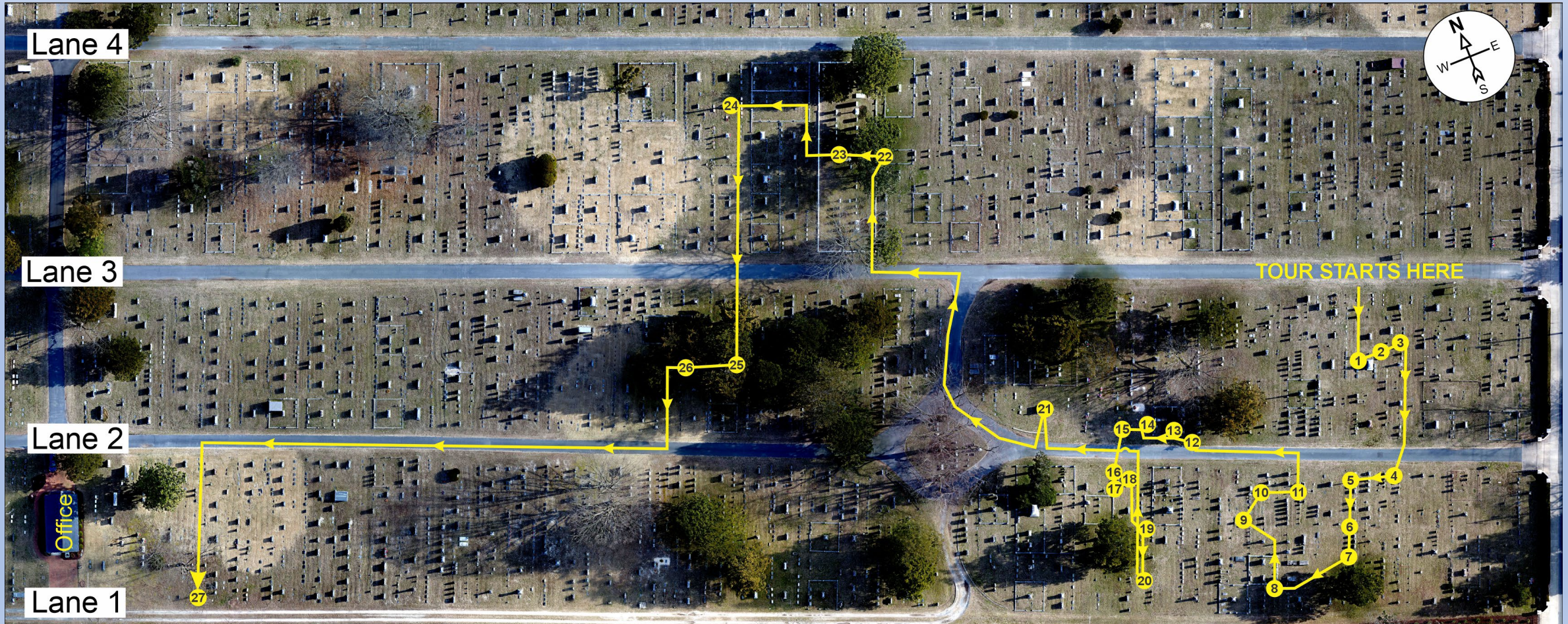
The column and all of the individual markers, but one, are made of pink marble. The odd one is made of pink granite, probably substituted because pink marble was not available at the time of need.

Granite is “speckled” while **Marble** has “swirls”.



HISTORIC MARKERS WALKING TOUR

Now walk south along the aisle until cross Lane 3. Once you cross Lane 3, Stop 25 will be under the trees.
Stop 26 is just to the west of Stop 25.



Stop 25 – Capt. George E. Ingersoll



This marker has the **HAND OF GOD PLUCKING A LINK OF A CHAIN**. This symbol represents God. His wife Margaret also has this symbol.



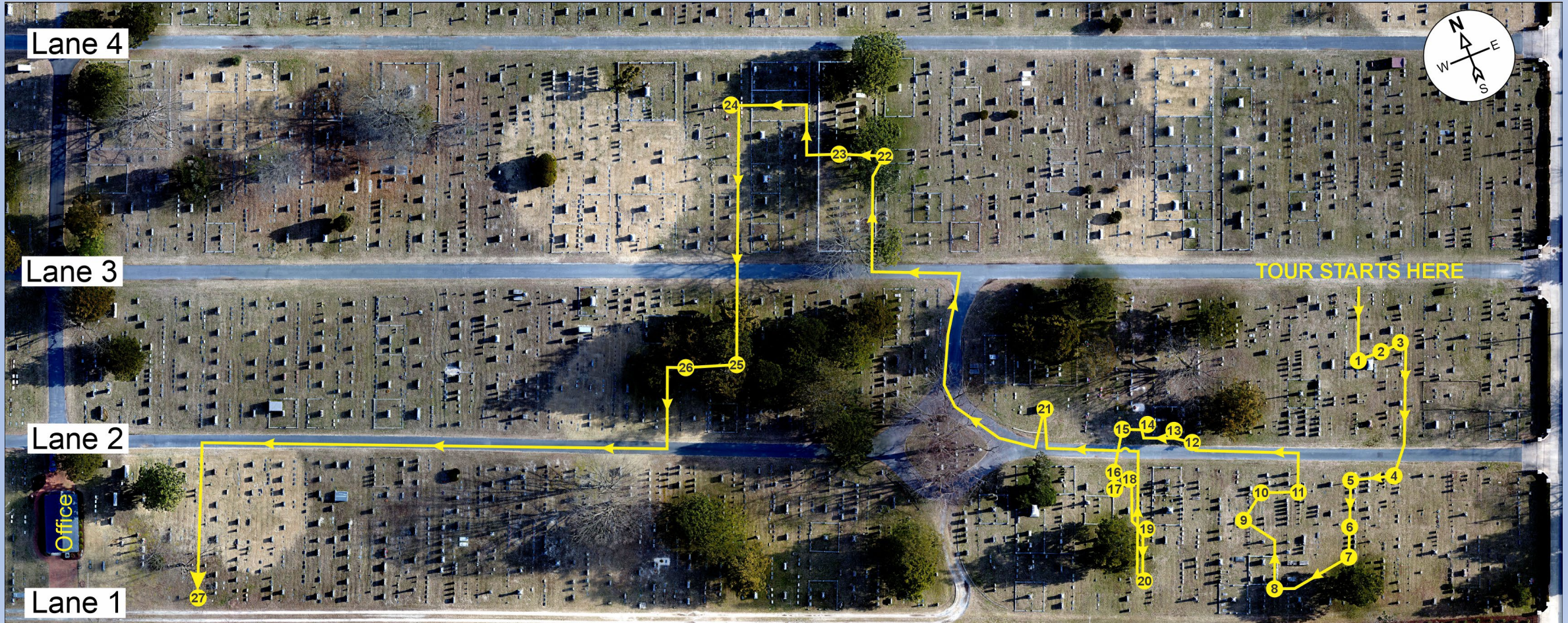
Stop 26 – Naylor-Coles Monument

This is another impressively-sized example of a **HALF-FINISHED GRAVESTONE**. The entire lot is designed to look like something you might find in the mountains.



HISTORIC MARKERS WALKING TOUR

Travel south from Stop 26 until you reach Lane 2. Walk westward on Lane 2 towards the cemetery office. Stop 27 is a marble statue right along Lane 1. You can either cut down the aisle to reach it, or circle around the office to reach Lane 1.



Stop 27 – Vyetta Mary Marvel

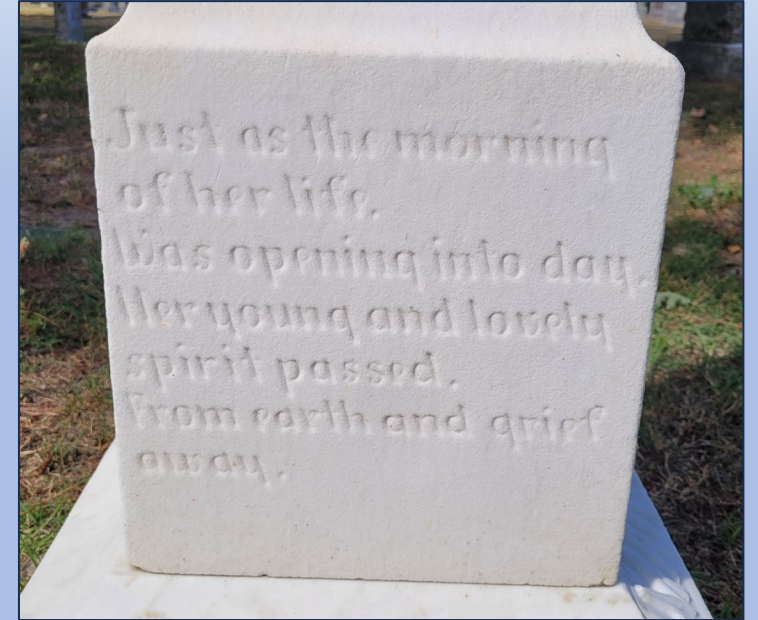
Memorialized with a Lovely Sculpture and Sweet Verse

ANGELS AND CHERUBS became popular in the second half of the 19th century during the American Victorian Period.

Angels watch over the graves of children and adults.

An angel holding flowers indicates the death of a child.

During this period, society's view on death shifted from dying and a body left behind, to the soul's forward progress to heaven and hope for a family reunion there someday. The artist of the statue is unknown.



A cherub on the grave of a child in another part of Parsons



HISTORIC MARKERS WALKING TOUR

THIS IS THE END OF THE MARKERS TOUR - You can return to Start via Lane 3.

